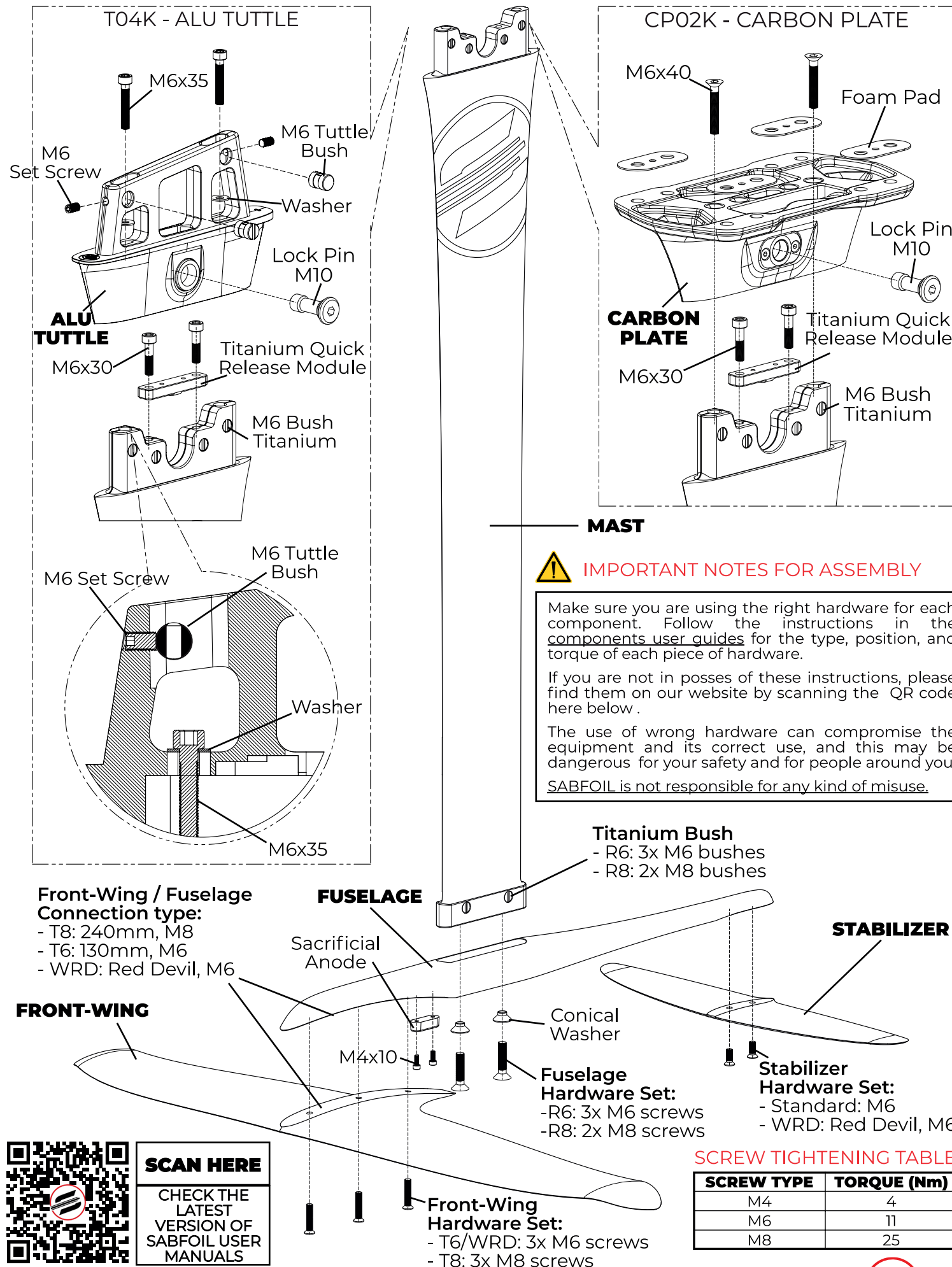


FORUM



USER MANUAL



SCAN HERE

CHECK THE LATEST VERSION OF SABFOIL USER MANUALS

FOIL SET - QUICK START GUIDE



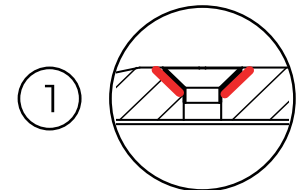
- If you got a FOIL SET your MAST is ready to use
- ANODES are already mounted on MAST and FUSELAGE when needed
- Apply LITHIUM GREASE to SCREWS before and each time you mount front-wing, stabilizer, fuselage, plate/tuttle and eventually Quick Release System.
- Follow the instructions on the "SCREW TIGHTENING TABLE" for a correct screw tightening



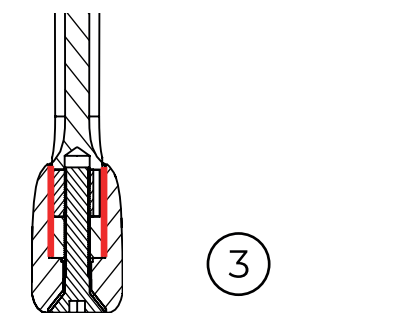
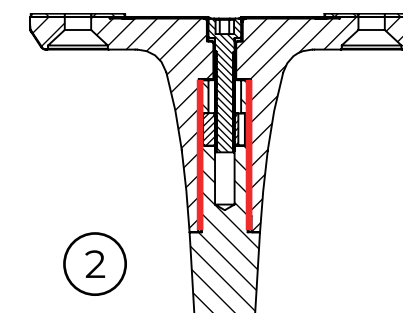
SMART TIP - GLUE CONICAL WASHERS

Conical washers (1) are great to protect components from wear and scratches when tightening screws.

We highly suggest to glue conical washers. Put a small quantity of glue on the red area (—), in this way you will never lose them and your components will be protected.



COMPONENTS TOLERANCES NOTICE

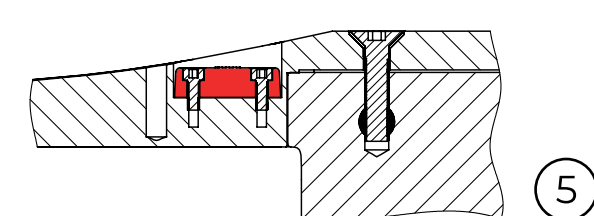
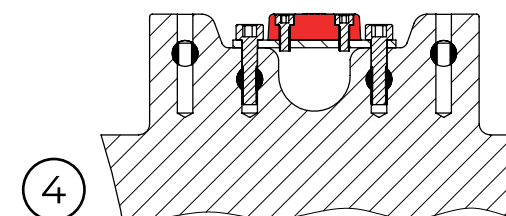


When connecting the mast to the plate / tuttle (2) and to the fuselage (3), it is normal for it to fit loose and have some play (see red lines above —). Thanks to this, it is possible assemble the hydrofoil in a easier and faster way.

Once the screws have been inserted and tightened, this play will no longer exist and the system will become rigid and solid.



SACRIFICIAL ANODES - CORROSION PROTECTION



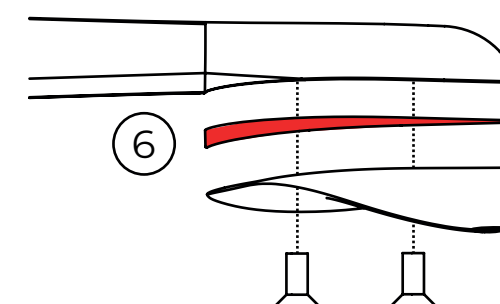
Both masts (4) and fuselages (5) have a slot for placing a sacrificial anode (red components —). When needed, by mounting the sacrificial anode, it will be possible to preserve the integrity of the metal parts from corrosion, increasing their life of use thanks to the phenomenon known as CATHODIC PROTECTION.

For maximum effectiveness, it is essential to check the condition of the anodes and keep them in good status, periodically cleaning them from the oxide layer that naturally forms. Once the anodes have reached their end of life, they must be replaced with spare parts

Titanium parts do not require the use of a sacrificial anode.



HOW TO CORRECTLY USE SHIMS



To adjust the behavior of your hydrofoil you can use shims (6) (red component —) by acting on the angle of incidence of the stabilizer:

- Place the shim as shown in the figure, make sure that the two screws protrude at least 6-7 mm (if necessary use the extra screw sold together with the shims to reach this length)
- Tighten the two screws evenly as specified in the "SCREW TIGHTENING TABLE" and check that the stabilizer is firmly fixed (be sure that the screws do not touch the bottom of the threaded holes)

The greater the angle (negative degrees) of the foil will be, at the expense of some speed due to the increased drag.

IMPORTANT RULES FOR USE AND MAINTENANCE

- Before each use, check that all screws are tight with the right tightening torque, as described in this manual
- Always keep the threaded holes and any other connection between carbon and metal clean and lubricated with lithium grease to avoid and prevent oxidation due to use in water (especially if salty)
- After each use, disassemble and wash all the parts with fresh water and dry them with a soft cloth
- Do not expose to extreme temperatures or direct sunlight over long periods. Do not expose to temperatures above 100° C / 212° F
- Store the foil in a safe and dry place in order to prevent injury to people and / or damage to the product
- Make sure that during mounting the sand does not stick in the threads



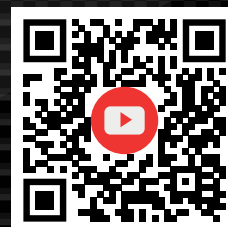
FOLLOW US ON SOCIAL MEDIA



FACEBOOK



INSTAGRAM



YOUTUBE

